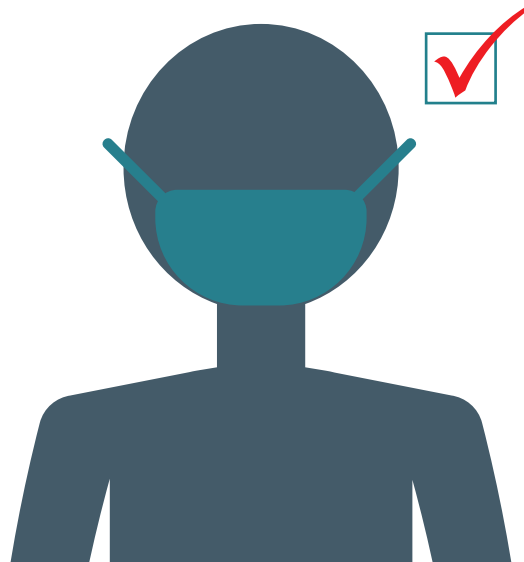


Mandatory Face Mask or Covering

in any indoor area of the
premises of a business or
organization.



Required at this location

Any person in the indoor area of the premises of the business or organization, or in a vehicle that is operating as part of the business or organization, wears a mask or face covering in a manner that covers their mouth, nose and chin during any period when they are in the indoor area.

Some exemptions may apply.

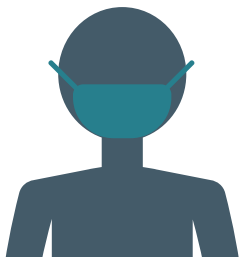
ONTARIO REGULATION 364/20

Please be kind and don't judge others - some people can't wear a face covering.



**Lambton
Public Health**

Local COVID-19 information:
LambtonPublicHealth.ca



Mandatory Face Mask or Covering

in a vehicle that is
operating as part of a
business or organization.

Required in this vehicle

Any person in the indoor area of the premises of the business or organization, or in a vehicle that is operating as part of the business or organization, wears a mask or face covering in a manner that covers their mouth, nose and chin during any period when they are in the indoor area.

Some exemptions may apply.

ONTARIO REGULATION 364/20

Please be kind and don't judge others -
some people can't wear a face covering.



**Lambton
Public Health**

Local COVID-19 information:
[LambtonPublicHealth.ca](https://www.lambtonpublichealth.ca)